

FIGURE 1 – Plan map of the ACKIO area

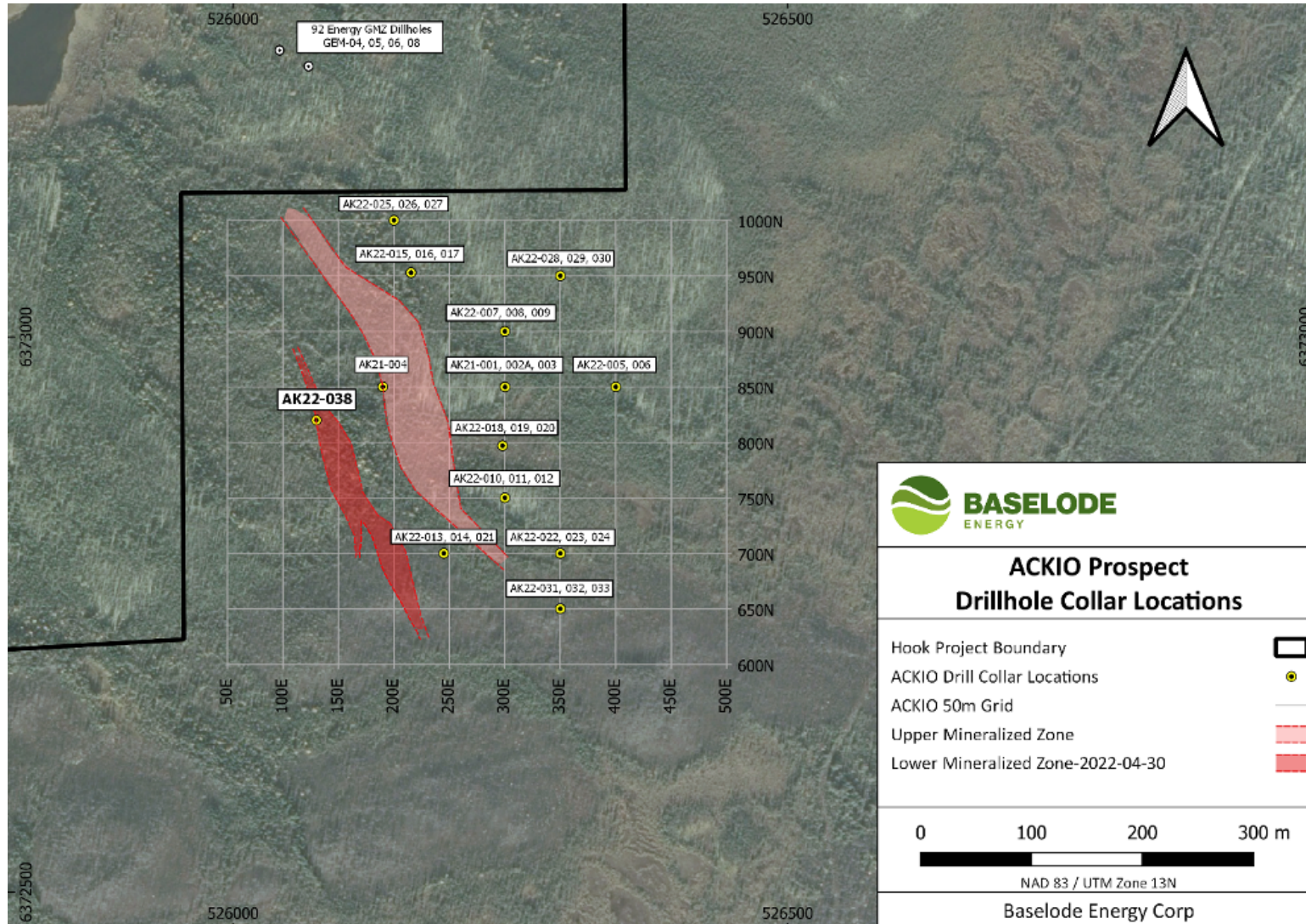


FIGURE 2 – Elevated radioactivity directly beneath overburden, drill hole AK22-038 (overburden/basement contact defined at red line)



TABLE 1 – Drill collar details and continuous composite elevated radioactivity results from drill hole AK22-038

AK22-038	ACKIO	526,075	6,372,925	469	90	-85	168	914 cps over 6.25 m at 35.85 m	Assay results pending
							includes	2,057 cps over 1.75 m at 35.85 m	Assay results pending
								312 cps over 5.5 m at 48.2 m	Assay results pending
								441 cps over 3.4 m at 68.75 m	Assay results pending
								371 cps over 0.5 m at 74.6 m	Assay results pending
1 DDH							168.00	1 DDH	0 DDH

NOTES: East and North units are metres using NAD83 datum, UTM Zone 13N

Elevation is recorded as "metres above sea level"

EOH = End of hole, measured in metres

Composite radioactivity results use 300 cps cut-off and do not contain greater than 2.0 m consecutive dilution