

FIGURE 1 – Plan map of the ACKIO mineralized surface expression

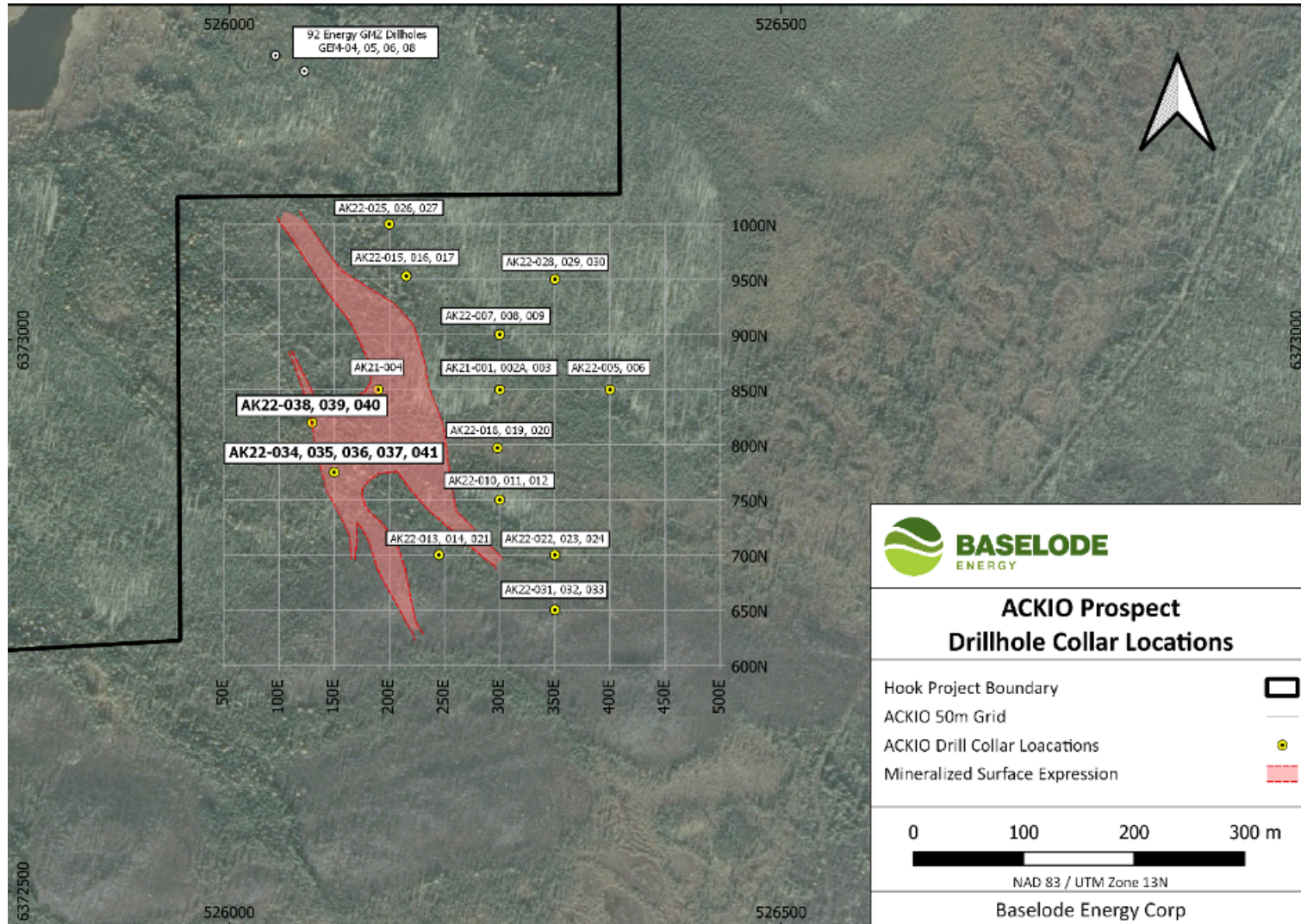


TABLE 1 – Drill collar details and continuous composite elevated radioactivity results from drill holes AK22-034 to AK22-041

DDH	Target Area	East	North	Elevation	Az.	Dip	EOH	Radioactivity (>300 cps)	Assay Results (>0.5 wt% U ₃ O ₈)
AK22-34	ACKIO	526,092	6,372,881	465	90	-85	334	340 cps over 0.05 m at 157.7 m	Assay results pending
								750 cps over 0.1 m at 160.25 m	Assay results pending
								500 cps over 0.5 m at 166.1 m	Assay results pending
								1,043 cps over 5.5 m at 170.9 m*	Assay results pending
								includes 3,725 cps over 0.5 m at 174.35 m	Assay results pending
								470 cps over 0.3 m at 201.9 m	Assay results pending
								615 cps over 0.25 m at 224.15 m	Assay results pending
AK22-35	ACKIO	526,092	6,372,881	465	90	-65	345	1,100 cps over 0.75 m at 150.65 m	Assay results pending
								1,272 cps over 7.35 m at 160.3 m	Assay results pending
								includes 2,957 cps over 0.65 m at 166.25 m	Assay results pending
AK22-36	ACKIO	526,092	6,372,881	465	90	-45	261	437 cps over 5.8 m at 133.4 m	Assay results pending
								658 cps over 7.5 m at 141.75 m	Assay results pending
								449 cps over 2.95 m at 155.4 m	Assay results pending
AK22-37	ACKIO	526,092	6,372,881	465	270	-85	315	538 cps over 29.25 at 129.95 m	Assay results pending
								includes 3,623 cps over 0.25 m at 145.35 m	Assay results pending
								and 3,000 cps over 0.45 m at 156.7 m	Assay results pending
								2,450 cps over 0.25 m at 271.05 m	Assay results pending
AK22-38	ACKIO	526,075	6,372,925	466	90	-85	261	914 cps over 6.25 m at 35.85 m	Assay results pending
								includes 2,057 cps over 1.75 m at 35.85 m	Assay results pending
								312 cps over 5.5 m at 48.2 m	Assay results pending
								441 cps over 3.4 m at 68.75 m	Assay results pending
								371 cps over 0.5 m at 74.6 m	Assay results pending
								7,914 cps over 0.2 m at 225.5 m	Assay results pending
								includes 18,600 cps over 0.05 m at 225.5 m	Assay results pending
600 cps over 0.15 m at 229.15 m	Assay results pending								
AK22-39	ACKIO	526,075	6,372,925	466	90	-65	298.8	640 cps over 8.65 m at 40.95 m	Assay results pending
								435 cps over 2.95 m at 52.35 m	Assay results pending
								667 cps over 0.65 m at 58.3 m	Assay results pending
								700 cps over 0.85 m at 156.45 m	Assay results pending
								884 cps over 10.45 m at 162.65 m	Assay results pending

								590 cps over 0.55 m at 190.2 m	Assay results pending
AK22-40	ACKIO	526,075	6,372,925	466	90	-45	330	744 cps over 22.75 m at 115.05 m	Assay results pending
								337 cps over 4.8 m at 140.35 m	Assay results pending
AK22-41	ACKIO	526,092	6,372,881	465	270	-65	258	424 cps over 4.6 m at 47.45 m	Assay results pending
								941 cps over 0.5 m at 88.25 m	Assay results pending
								550 cps over 0.2 m at 92.5 m	Assay results pending
								829 cps over 1.1 m at 96.6 m	Assay results pending
								976 cps over 3.8 m at 117.75 m	Assay results pending
							includes	8,655 cps over 0.2 m at 118.5 m	Assay results pending
8 DDH							2,402.80	8 DDH	0 DDH

NOTES: East and North units are metres using NAD83 datum, UTM Zone 13N

Elevation is recorded as "metres above sea level"

Az. = Azimuth, EOH = End of hole (measured in metres)

Composite radioactivity results use 300 cps cut-off and do not contain greater than 2.0 m consecutive dilution

*includes 0.6 m core loss over interval length